

**ВО ИЗМИНАТИТЕ ПЕТ ГОДИНИ ВО РЕПУБЛИКА
МАКЕДОНИЈА СЕ ТРОШАТ СРЕДСТВА ЗА СКРИНИНГ НА
КАРЦИНОМ НА ГРЛО НА МАТКА, А ПАК ЖЕНИТЕ РЕТКО
ГИ ДОБИВААТ УСЛУГИТЕ ЗА БЕСПЛАТЕН СКРИНИНГ НА
КАРЦИНОМ НА ГРЛО НА МАТКА**

-

(2019 -2021

)
50%

109.942.560¹
24 60

36.647.520

163.149.558

2022 2025

80%

24 60

54.383.186

-

;

-

151

2

;

-

24 60

;

-

;

-

;

-

;

¹ 20.464.230

682.141

24 60

; 68.214.100

20.464.230

50%

24 60

; 300.000

500.000

2

2012 – 2016 :

| | 2012 | 2014 ³ |
|--------|-------|-------------------|
| - ; | | |
| - ; | | |
| - 34 | 65 %; | |
| - ; | 30 | |
| - 60 % | 12 | |
| - 29% | 24 60 | |
| - 62 % | 24 60 | |
| - ; | | |
| - 75 % | | |
| - 1 % | | |
| - ; | | |

(
).

³ 2014

2011 2014

2014

4,1

100 000

1,5

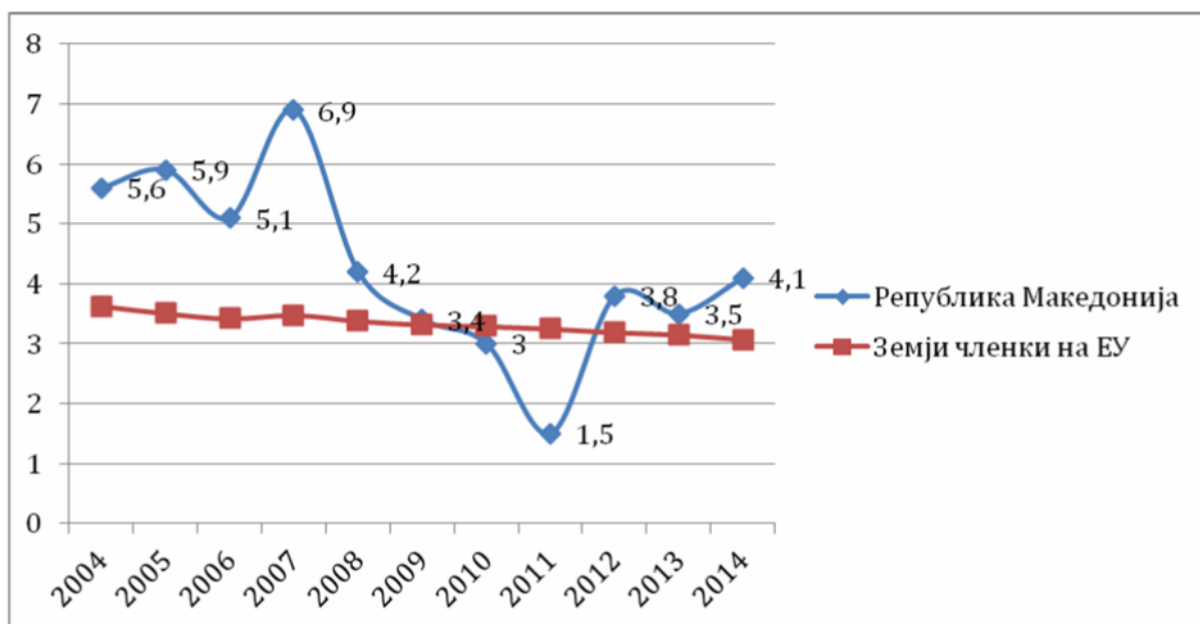
100 000

2011

(

2).

2).



1:

100 000

2004 2014

(:

European Health for All Data Base)

2012 2016

100%

24

60

20 %

24 60 80
 2012 2016 , 71 %
 24 60
 82 %
 2012 2016
 200 575 682 141
 24 60 (29 %
 123 478 (62 %),
 105 135 (85 %),
).
 70 80 %⁴
 24 60
 59 79 %

| 2012 – 2016 | | | | |
|-------------|---------|---------|--|---------|
| | 24 – 60 | | | |
| | 682 141 | 135 200 | | 123 478 |
| | 100 % | 19,82 | | 18,10 |
| | 682 141 | 161 000 | | 200 575 |
| | 100 % | 23,60 | | 29,40 |
| | 682 141 | 143 000 | | 105 135 |
| | 100 % | 20,97 | | 15,42 |

1:
 24 60
 2012 2016
 2012 2016
 20%

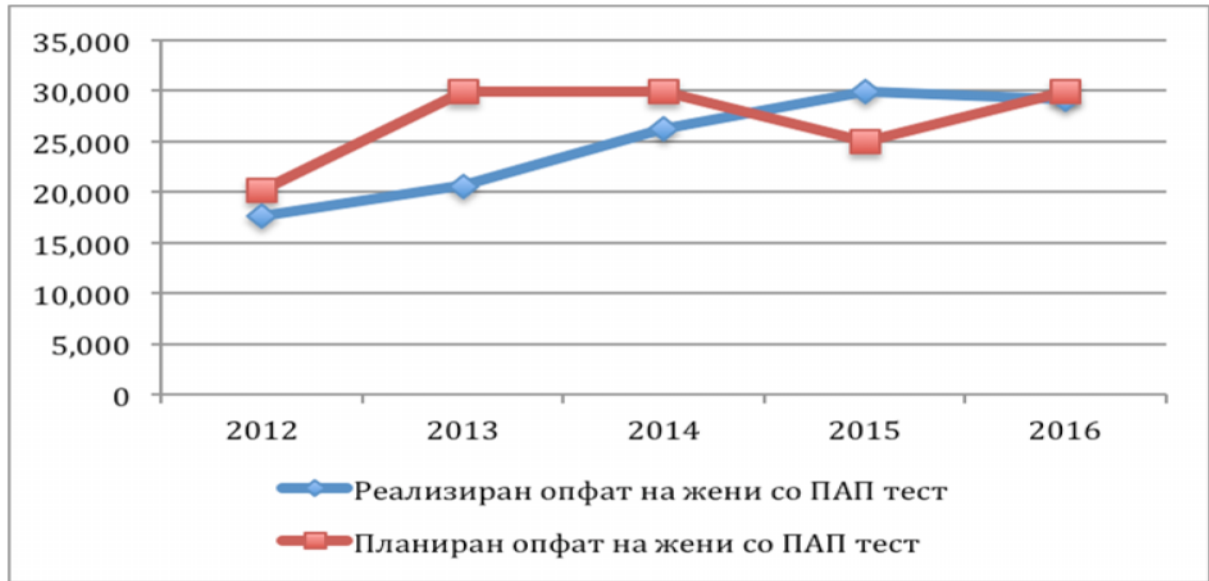
⁴ <http://esem.org.mk/pdf/Publikacii/2015/Preporaki%20Skining%20kancer.pdf>

24 60

2%).

2015

2)



2:

60

24

2012 2016

13%

5%

4%

2%

24 60

89

50

000

12

2012 2017 139 130
 (93%) ().
 (), 85
 (65%).

| | | | |
|------|-----|-----|----|
| | | | |
| 2012 | 145 | 128 | 71 |
| 2013 | 132 | 116 | |
| 2014 | 138 | 131 | 89 |
| 2015 | 137 | 130 | 86 |
| 2016 | 137 | 126 | 94 |
| 2017 | 145 | 136 | |
| : | 139 | 130 | 85 |

2:

2012 2017 (:

)

12 ,

151
30

34
24 60

34

30



| | |
|---|---|
| * | : |
| | — |
| | — |
| | — |

1:

(:

)

2012 2017

60 %

12

, 2012 2017 358 528 12
(40 %).

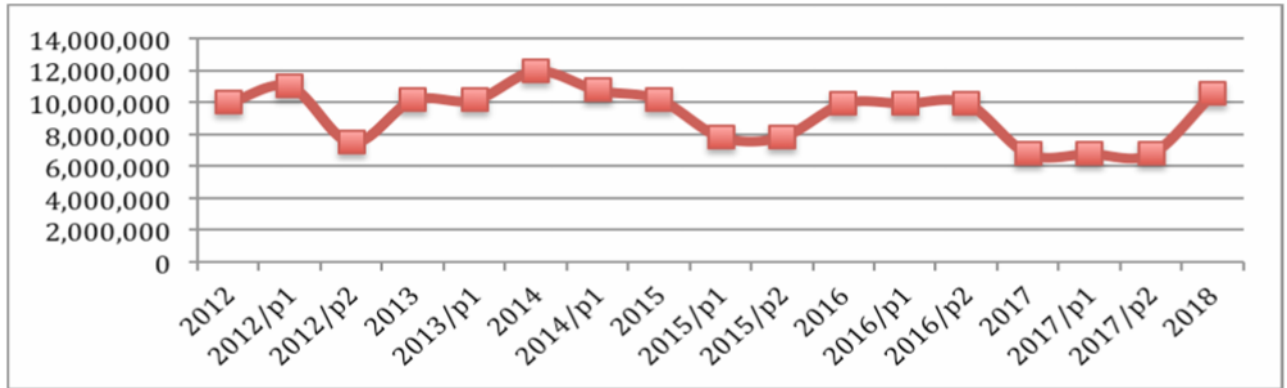
| | 2012 | 2013 | 2014 | 2015 | 2016 | 2017 |
|----|---------|---------|---------|---------|---------|---------|
| | 385 452 | 381 380 | 391 934 | 423 029 | 438 006 | 489 892 |
| 12 | 895 376 | 898 021 | 899 542 | 889 601 | 889 601 | 889 601 |
| | 43.05% | 42.47% | 43.57% | 47.55% | 49.24% | 55.07% |

3: 14 14 2012 2017

2012 2018
33,5
(
) , 28 % (9,4
)
.,

2012 2018

2018



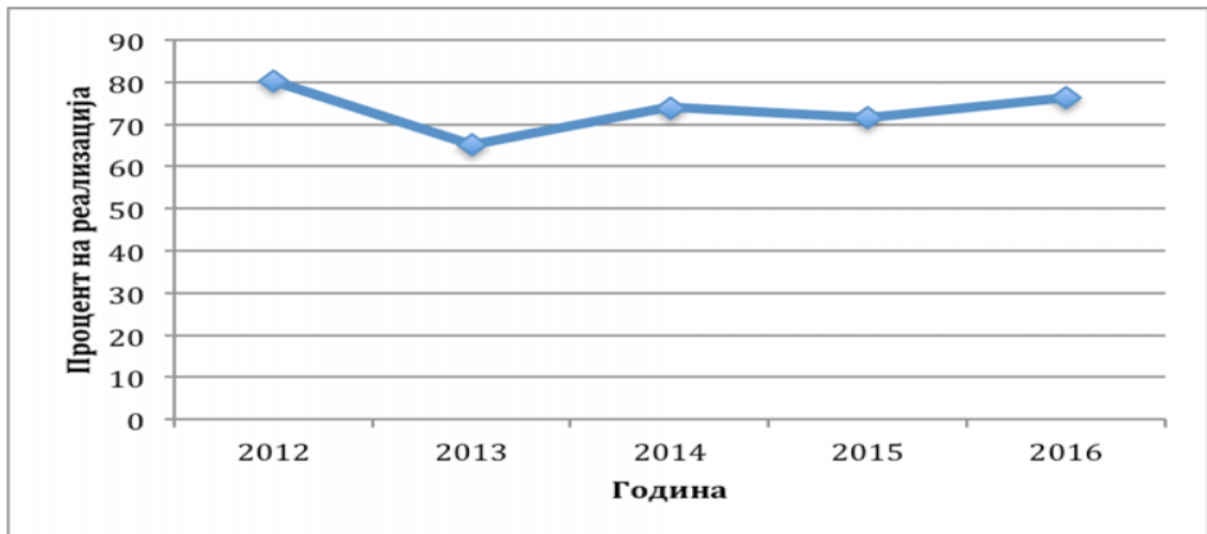
3:

2012 2018

* : 1 2 3
(1) (2).

1 %

5



⁵ 2013 19% ; 2012 ; 2014 13%
2013 ; 2015 3% ; 2016 7% ; 2014 ; 2013 ;

4:

2012 2014

| 2012 | 2016 | | |
|---------------|--------------|---------------|--------|
| 45 930 000,00 | | 34 370 800,00 | (75 %) |
| | | |) |
| | | : | ' |
| - | | | ' |
| | | | - |
| | | 24 220 580,00 | (76 %) |
| | | |) |
| | | | - |
| | | 7 450 220,00 | (86 %) |
| | | |) |
| | | 10-660 000,00 | (44 %) |
| | | |) |
| | | 150 000,00 | (19 %) |
| | | |) |
| | | () | () |
| | 1 890 000,00 | (49 %) |) : |
| | | | ' |
| | | | ; |
| | | | ' |
| | | | ; |
| | | | ; |
| | | | 6. |

6 2012
2013 2014

2016

(2013 2014

).

(84 94

3%. 2016

2015

2014

2013

2016, 2015, 2014 2012

Финансиски поддржано од:

